

PROWORXTM



CONSTRUCTION PRODUCTS



Origin Point Brands, LLC
2453 King Street Extension • Charleston, SC 29405
Office 843.747.9812



Quality Begins at the Origin Point



Origin Point Brands is a leading supplier of consumer products sold through the Lawn & Garden and Hardware industries. Originally founded in 1998 as Garden Zone, manufacturing expertise in light-gauge wire and metal lawn and garden products was the catalyst for early success. Innovative merchandising solutions, product design and packaging have continued to help drive the company's growth.

Based in Charleston, South Carolina, Origin Point Brands is a vertically integrated, global company. We maintain manufacturing and distribution facilities in both the United States and in Asia. Origin Point Brands' mix of products can be fulfilled internationally via direct container and domestically via truck load, LTL or small package. We use a team approach when taking care of our customers and our US staff includes professionals in Sales, Customer Service, Logistics, Marketing, Manufacturing, Product Development and Technology.

Success with our customers has helped Origin Point Brands expand into multiple product categories including: Wire Fence & Netting, Building Materials, Hardware, Pet, Safety & Security and Residential Fence. We will continue to innovate as we work with customers to provide total category solutions. If you are looking for a turn-key partner to develop, manufacture, distribute and merchandise quality products with, we invite you to contact Origin Point Brands.

Best Regards,
Origin Point Brands

INTRODUCTION

www.OriginPointBrands.com



CATALOG

NAIL STAKES	● 02
ANCHOR BOLTS	● 03
THREADED ROD	● 03
BAR TIE	● 04
TIE WIRE AND TIE WIRE REELS	● 04
METAL BAR SUPPORTS	● 05-06
FOUNDATION CHAIRS	● 07
PLASTIC ROD CHAIR MUSHROOM CAPS	● 08
METAL LATH	● 09
STUCCO NETTING	● 10
EROSION, VINEYARD AND T-POSTS	● 10
FORMING PRODUCTS	● 11-12
UNDER FORMING PRODUCTS	● 13
MASONRY PRODUCTS	● 14
DISPLAY RACK FOR CONCRETE	● 15
ACCESSORIES ITEMS AND FASTENERS	

NAIL STAKES



Round

Thickness	Points	Lengths	Finish
3/4"	Pulled/Pencil	12" to 48"	Oiled/Painted
7/8"	Pulled/Pencil	12" to 48"	Oiled/Painted

Available with holes and without holes
Packaging 10 piece per bundle



Square

Thickness	Points	Lengths	Finish
5/8"	Pulled/Pencil	12" to 48"	Oiled/Painted

Available with holes and without holes
Packaging 10 piece per bundle



Flat

Thickness	Points	Lengths	Finish
3/8"x1-1/2"	C or V type	12" to 48"	Oiled/Painted

Packaging 10 piece per bundle



Flat I Style

Thickness	Points	Lengths	Finish
3/8"	V type	12" to 48"	Oiled/Painted

Packaging 10 piece per bundle

ANCHOR BOLTS



Diameter	Lengths	Increments	Finish
3/8"	6" to 36"	2"	Plain or HDG
1/2"	6" to 36"	2"	Plain or HDG
5/8"	6" to 36"	2"	Plain or HDG
3/4"	6" to 36"	2"	Plain or HDG
7/8"	6" to 36"	2"	Plain or HDG
1"	6" to 36"	2"	Plain or HDG
1-1/4"	6" to 36"	2"	Plain or HDG

Cartons - with hex nut & round washer standard

Bags - with hex nut only - unless specified differently

WASHERS



Square Washer with Round Hole



Square Washer with Slotted Hole

Type	Size	Finish
Round or Slotted	2"x2"x1/8"	Plain or HDG
Round or Slotted	2"x2"x3/16"	Plain or HDG
Round or Slotted	2"x2"x1/4"	Plain or HDG
Round or Slotted	2-1/2"x2-1/2"x1/4"	Plain or HDG
Round or Slotted	3"x3"x1/8"	Plain or HDG
Round or Slotted	3"x3"x3/16"	Plain or HDG
Round or Slotted	3"x3"x1/4"	Plain or HDG
Round or Slotted	3"x3"x3/8"	Plain or HDG
Round or Slotted	3-1/2"x3-1/2"x1/4"	Plain or HDG
Round or Slotted	3-1/2"x3-1/2"x3/8"	Plain or HDG
Round or Slotted	4"x4"x 1/4"	Plain or HDG

THREADED ROD



Diameter	Lengths	Finish
1/4"	1', 1.5', 2', 3', 6', 10', 12'	Zinc Plated/HDG/Stainless
5/16"	1', 1.5', 2', 3', 6', 10', 12'	Zinc Plated/HDG/Stainless
3/8"	1', 1.5', 2', 3', 6', 10', 12'	Zinc Plated/HDG/Stainless
1/2"	1', 1.5', 2', 3', 6', 10', 12'	Zinc Plated/HDG/Stainless
5/8"	1', 1.5', 2', 3', 6', 10', 12'	Zinc Plated/HDG/Stainless
3/4"	1', 1.5', 2', 3', 6', 10', 12'	Zinc Plated/HDG/Stainless
7/8"	1', 1.5', 2', 3', 6', 10', 12'	Zinc Plated/HDG/Stainless
1"	1', 1.5', 2', 3', 6', 10', 12'	Zinc Plated/HDG/Stainless
1-1/8"	1', 1.5', 2', 3', 6', 10', 12'	Zinc Plated/HDG/Stainless
1-1/4"	1', 1.5', 2', 3', 6', 10', 12'	Zinc Plated/HDG/Stainless

BAR TIES



Bar Tie

Gauge	Lengths	Increments	Finish
16	4" to 30"	1/2"	Plain, EG, HDG, PVC
16.5	4" to 30"	1/2"	Plain, EG, HDG, PVC
17	4" to 30"	1/2"	Plain, EG, HDG, PVC
18	4" to 30"	1/2"	Plain, EG, HDG, PVC
19	4" to 30"	1/2"	Plain, EG, HDG, PVC

Packaging: 4x1000, 5x1000, 1x4000, 1x5000

TIE WIRE AND TIE WIRE REELS



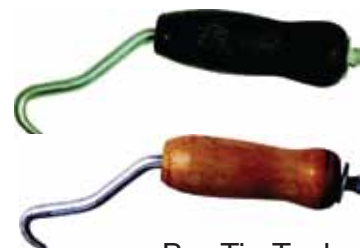
Gauge	Coil Weights	Hole Type	Finish
15	3.0lbs/3.5lbs	Round/Square	Black Annealed, Galvanized or PVC
16	3.0lbs/3.5lbs	Round/Square	Black Annealed, Galvanized or PVC
16.5	3.0lbs/3.5lbs	Round/Square	Black Annealed, Galvanized or PVC
17	3.0lbs/3.5lbs	Round/Square	Black Annealed, Galvanized or PVC



10 Coils to a Master

Bundle Wire

Gauge	Coil Weights	Hole Type	Finish
9	50/100lbs	Round	Black Annealed, Galvanized or PVC
11	50/100lbs	Round	Black Annealed, Galvanized or PVC
12	50/100lbs	Round	Black Annealed, Galvanized or PVC
14	50/100lbs	Round	Black Annealed, Galvanized or PVC
16	50/100lbs	Round	Black Annealed, Galvanized or PVC



Bar Tie Tool



Twister Tools & Tie Wire Dispensers
Manual & automated bar tie twister tools
Wood or plastic handles available
Aluminum or plastic dispensers

BAR SUPPORTS

Bar Chair-BC

Heights
3/4" to 2"

Height Increments
1/4"

Finishes

Plain, Dipped Feet, Tipped Feet, Epoxy Coated, HDG, Stainless



High Chair-HC

Heights
2" to 6"

Height Increments
1/4"

Finishes

Plain, Dipped Feet, Tipped Feet, Epoxy Coated, HDG, Stainless



Continuous High Chair-CHC

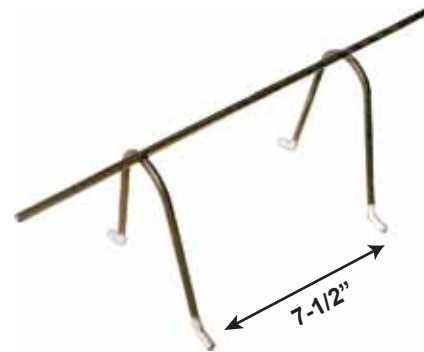
Heights
2" to 6"

Height Increments
1/4"

Lengths
5' & 10'

Finishes

Plain, Dipped Feet, Tipped Feet, Epoxy Coated, HDG, Stainless



Continuous High Chair Upper-CHCU

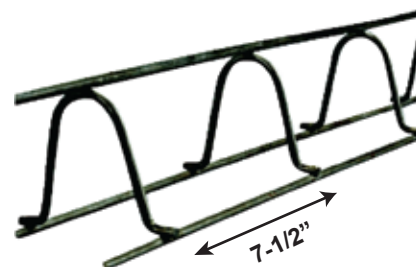
Heights
2" to 6"

Height Increments
1/4"

Lengths
5' & 10'

Finishes

Plain, Dipped Feet, Tipped Feet, Epoxy Coated, HDG, Stainless



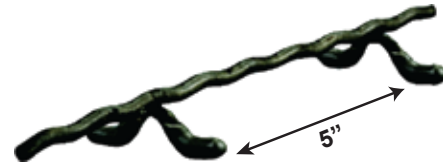
BAR SUPPORTS

Slab Bolster-SB

Heights **Height Increments**
3/4" to 3" 1/4"

Lengths
5' & 10'

Finishes
Plain, Dipped Feet, Tipped Feet, Epoxy Coated, HDG, Stainless

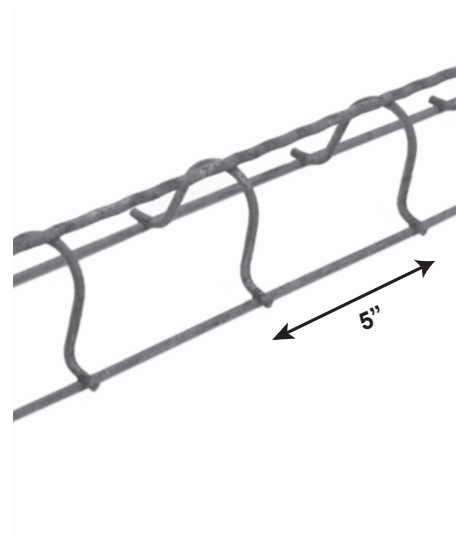


Slab Bolster Upper-SBU

Heights **Height Increments**
3/4" to 3" 1/4"

Lengths
5' & 10'

Finishes
Plain, Epoxy Coated, HDG, Stainless

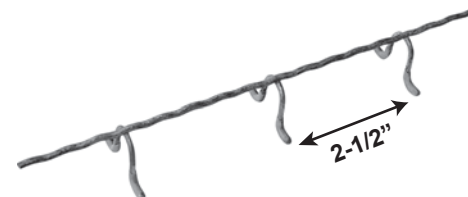


Beam Bolster-BB

Heights **Height Increments**
1" to 5" 1/4"

Lengths
5' & 10'

Finishes
Plain, Dipped Feet, Tipped Feet, Epoxy Coated, HDG, Stainless

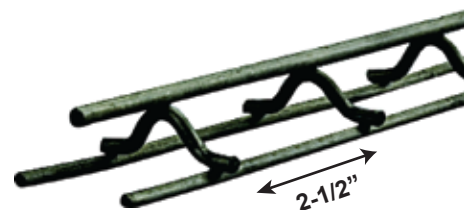


Beam Bolster Upper-BBU

Heights **Height Increments**
1" to 5" 1/4"

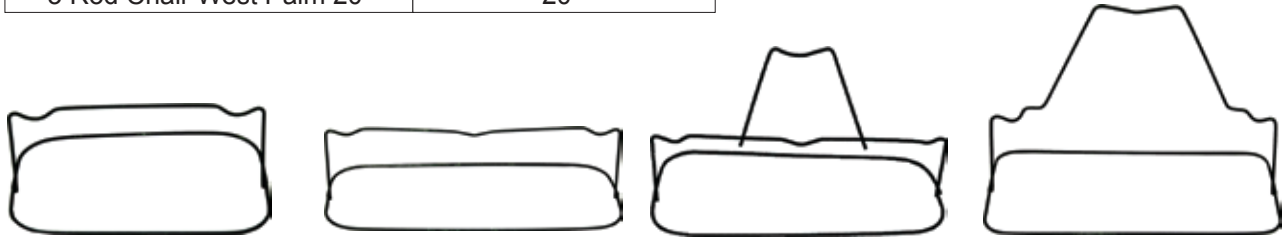
Lengths
5' & 10'

Finishes
Plain, Epoxy Coated, HDG, Stainless

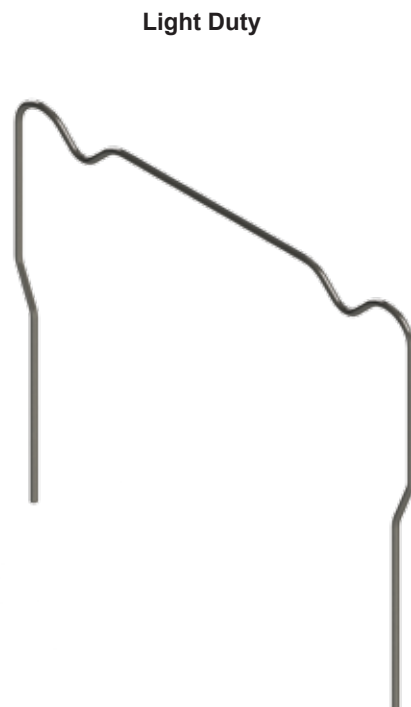
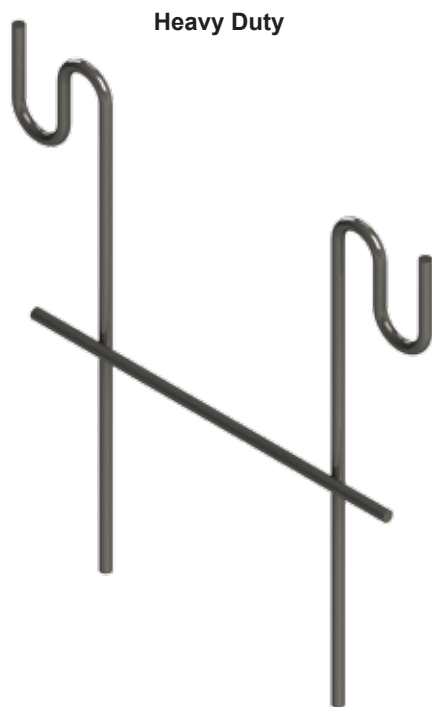


FOUNDATION CHAIRS

Item	Size Available
2 Rod Chair	6/8", 10/12"
3 Rod Chair	16", 20"
3 Rod Chair West Palm 16	16"
3 Rod Chair West Palm 20	20"



Quick Chairs



PLASTIC ACCESSORIES

OSHA Rebar Cap

Vertical Applications

Fits - rebar sizes 3/8" thru 3/4" diameters

Packaging: 25 or 100 piece cartons



OSHA Rebar Cap



Rebar Safety Cap

Rebar Safety Caps

Horizontal Applications

Fits - rebar sizes 3/8" thru 3/4" diameters

Packaging: 25 or 100 piece bags

Mesh-up Chairs

Sizes	Packaging
1-1/2" - 2"	200 pcs/bag
2" - 2-1/2"	200 pcs/bag
2-1/2 - 3"	200 pcs/bag
3" - 3-1/2"	200 pcs/bag
3-1/2" - 4"	200 pcs/bag
4" - 4-1/2"	200 pcs/bag
4-1/2" - 5"	200 pcs/bag



Rebar Paving Chairs

Heights

1" to 4"

Height Increments

1/4"

Packaging

500 Pieces per Bag



Strand Chairs

Heights

1" to 4"



Plastic Slab Bolsters

Heights

3/4" to 4"

Height Increments

1/4"

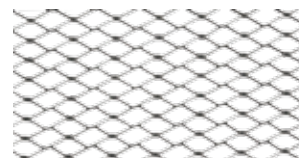
2-1/2' lengths which easily snap together



METAL LATH

Sheet Style	Lbs/Sq Yd	Sheet Size	Sq/Yds.	Pcs/Bundle
Flat Lath				
Flat Diamond	1.75 lbs.	27" x 96"	20	10
Flat Diamond	2.5 lbs.	27" x 96"	20	10
Flat Diamond	3.4 lbs.	27" x 96"	20	10
Self-Furring				
Dimpled	1.75 lbs.	27" x 96"	20	10
Dimpled	2.5 lbs.	27" x 96"	20	10
Dimpled	3.4 lbs.	27" x 96"	20	10
V-Grooved				
V-Grooved	1.75 lbs.	27" x 96"	20	10
V-Grooved	2.5 lbs.	27" x 96"	20	10
V-Grooved	3.4 lbs.	27" x 96"	20	10
3/8" Hi Rib				
3/8" Hi Rib	2.5 lbs.	27" x 96"	20	10
3/8" Hi Rib	3.4 lbs.	27" x 96"	20	10
3/8" Hi Rib	4.0 lbs.	27" x 96"	20	10

Certifications – meets ASTM C847 standard specification for metal lath, ICC-ES Evaluation Report ESR-3487



Flat Diamond



Dimpled



V-Groove



3/8" Hi Rib

Brick Mesh

Widths

10" & 15"

Roll Lengths

10' & 50'



Brick Mesh

Lath Corner Bead

Widths

1", 2", 2-1/2" & 3"

Lengths

4', 8' & 10'

Finishes

Zinc & HDG



Corner Bead

Expanded Flange Casing Bead

Widths

1/4" to 1-1/4"

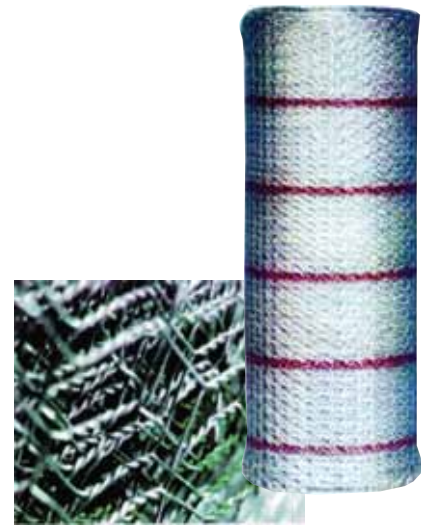
Lengths

10'

STUCCO NETTING

Sizes	Gauge	Finish	Roll Width
1-1/2" x 37-1/2" x 150'	17	Flat	68lbs
1-1/2" x 37-1/2" x 150'	17	Self-Furred	65lbs
1" x 36" x 150'	20	Flat	43lbs
1" x 36" x 150'	20	Self-Furred	40lbs
1" x 36" x 150'	20	Self-Furred	38lbs
1" x 36" x 150'	20	Self-Furred	36lbs
1" x 36" x 150'	20	Self-Furred	33lbs
1" x 4" x 150'			
1" x 12" x 150'			
1" x 18" x 150'			

Certifications meets ASTM C1032 and A641 standard specifications for stucco netting, ICC-ES Evaluation Report ESR-2733

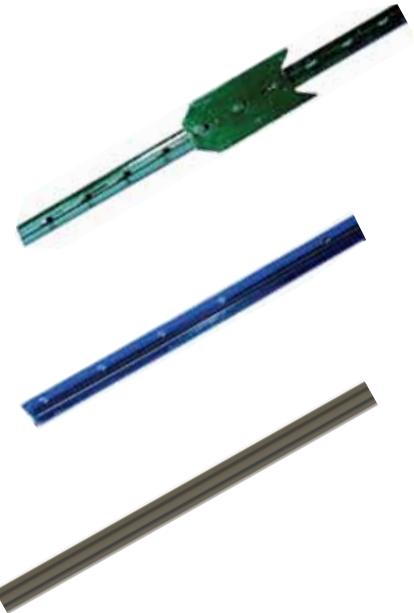


Erosion, Vineyard and T-Posts

Studded Post

Weight	Lengths	Finish
.85 Lbs/ft	3' to 12'	Plain, Painted, HDG & Powder Coated
.95 Lbs/ft	3' to 12'	Plain, Painted, HDG & Powder Coated
1.10 Lbs/ft	3' to 12'	Plain, Painted, HDG & Powder Coated
1.25 Lbs/ft	3' to 12'	Plain, Painted, HDG & Powder Coated
1.35 Lbs/ft	3' to 12'	Plain, Painted, HDG & Powder Coated

*Available with spade or without



Drilled Post

Weight	Lengths	Finish
0.95lbs	6' to 8'	Painted
1.25lbs	6' to 8'	Powder Coated

T-Post Drivers

Lengths
24" & 36"

Finish
Powder Coated



FORMING PRODUCTS: Wall Ties

The difference between nominal & full ties – nominal has ends which are 5/8" shorter than full ties



Nominal

Standard Nominal Ties

Sizes	Unit Qty.
4" Nominal	100
6" Nominal	100
8" Nominal	100
10" Nominal	100
12" Nominal	100
14" Nominal	50
16" Nominal	50
18" Nominal	50
20" Nominal	50
22" Nominal	50
24" Nominal	50

Two Combo Ties

Sizes	Unit Qty.
6-8"	100
8-10"	100
10-12"	100
12-14"	50
14-16"	50
16-18"	50
18-20"	50
20-22"	50
22-24"	50

Three Combo Ties

Sizes	Unit Qty.
6-8-10"	100
8-10-12"	100
10-12-14"	50
12-14-16"	50
14-16-18"	50
16-18-20"	50
18-20-22"	50
20-22-24"	

Standard Ties = 2250 lbs work loads
(based on 2:1 Ratio)



Full

Full Wall Ties

Sizes	Unit Qty.
4" Full	100
6" Full	100
8" Full	100
10" Full	100
12" Full	100
14" Full	50
16" Full	50
18" Full	50
20" Full	50
22" Full	50
24" Full	50

Two Combo Ties

Sizes	Unit Qty.
6-8"	100
8-10"	100
10-12"	100
12-14"	50
14-16"	50
16-18"	50
18-20"	50
20-22"	50
22-24"	50

Three Combo Ties

Sizes	Unit Qty.
6-8-10"	100
8-10-12"	100
10-12-14"	50
12-14-16"	50
14-16-18"	50
16-18-20"	50
18-20-22"	50
20-22-24"	

Full Ties = 3000 lbs work loads
(based on 2:1 Ratio)

Turnbuckles



FORMING PRODUCTS

Snap Tie Wedge



Long Wedge Bolt



Standard Wedge Bolt



Flat Head Pin



Round Head Pin



Curved Wedge



Combo Pin



Straight Wedge



FORMING PRODUCTS

A Bracket



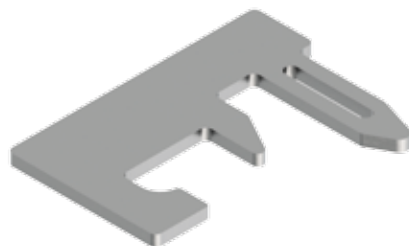
C Bracket



John Bracket



Gang Wedge Bolt



Waler Holder



Spreader Cleats



Wall Thickness	Plywood Thickness
6"	3/4", 1-1/8", 1-5/8"
8"	3/4", 1-1/8", 1-5/8"
10"	3/4", 1-1/8", 1-5/8"
12"	3/4", 1-1/8", 1-5/8"
14"	3/4", 1-1/8", 1-5/8"
18"	3/4", 1-1/8", 1-5/8"

Safe working load of 750 lbs is based on an approximate 2:1 safety factor

MASONRY PRODUCTS

Block Mesh

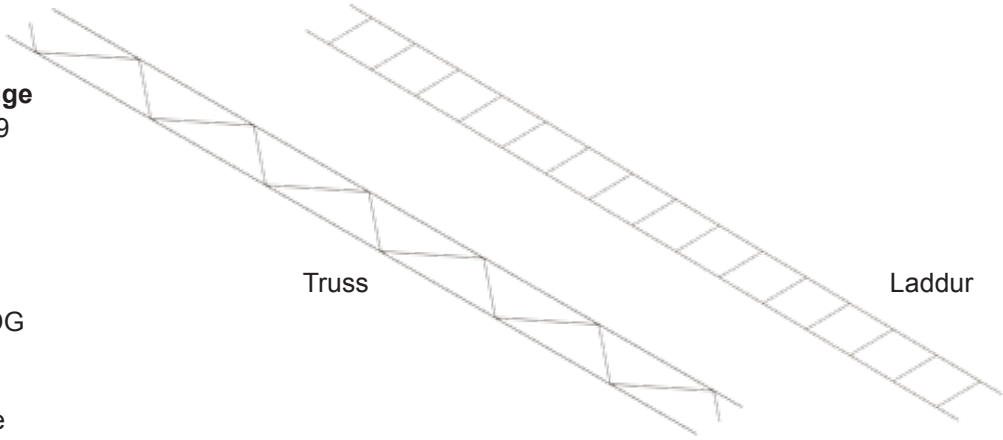
Heights
4" to 12"

Gauge
9 x 9

Lengths
10'

Finishes
Mill Galvanized or HDG

Packaging
50 Pieces to a Bundle



Brick Ties

Size
.870" W x 6.370" H

Nominal Thickness
.030" +/- .00031 (22G)

Styles
Straight & Scalloped

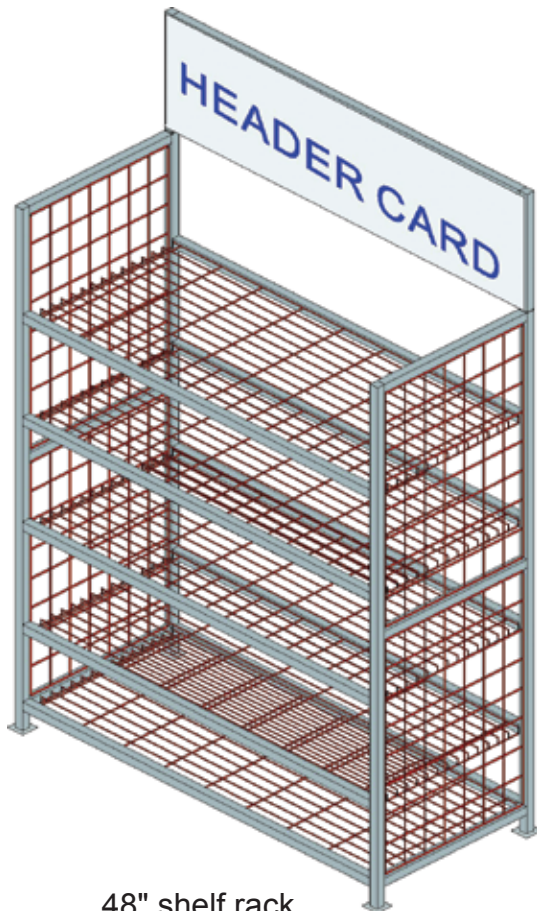
Packaging
250 or 500 Pieces

Gauge
22 & 28

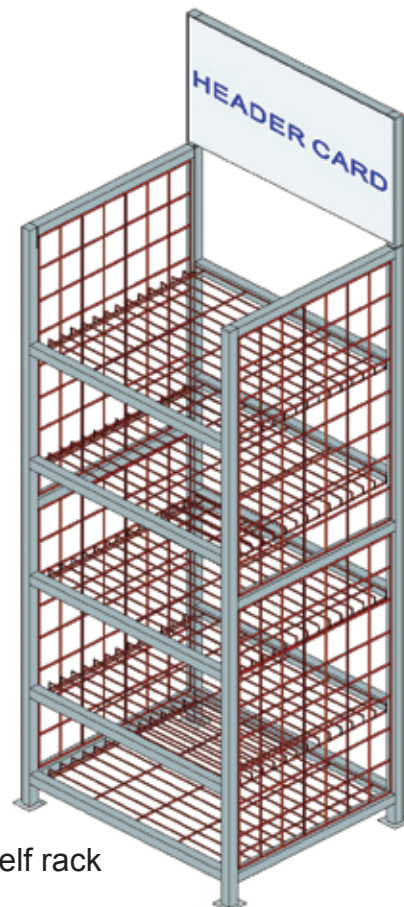
Finishes
Galvanized



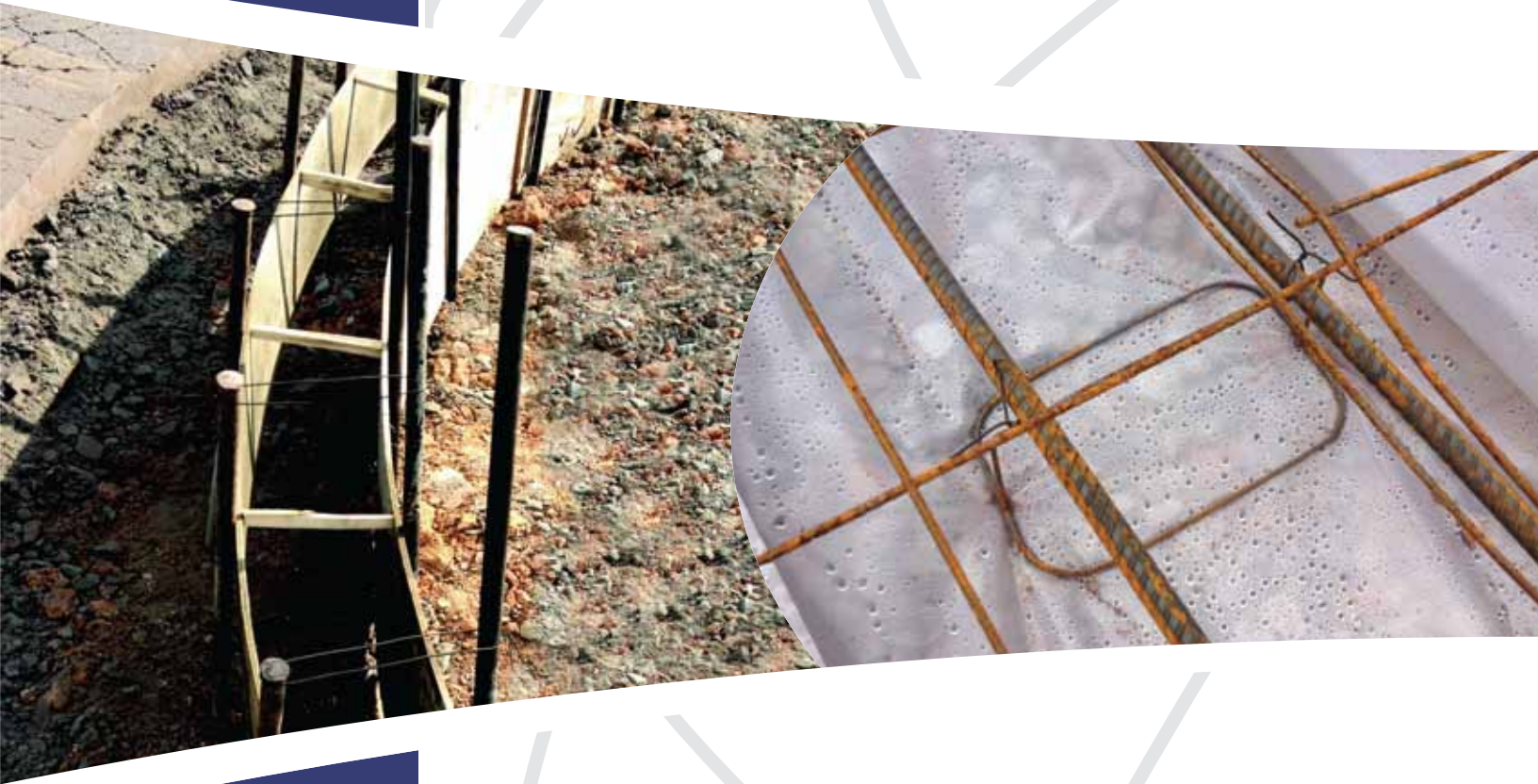
DISPLAY RACK FOR CONCRETE ACCESSORY ITEMS AND FASTENERS



48" shelf rack



24" shelf rack



PROWORXTM

Origin Point Brands, LLC
2453 King Street Extension • Charleston, SC 29405
Office 843.747.9812